

Miura²⁰⁰

Fully-automated Clinical Chemistry Analyser
Up to 420 tests / hr with ISE module on board

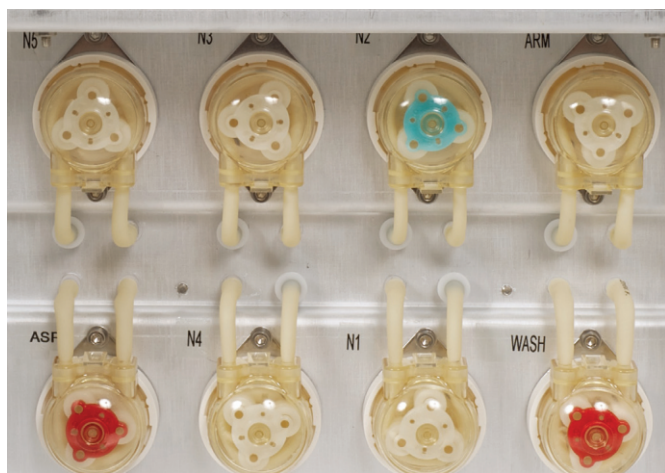
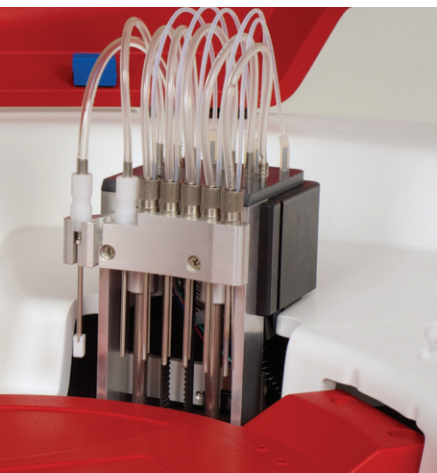


ISE S.r.l.

CUSTOMISED SOLUTIONS
FOR YOUR LABORATORY



MIURA200



PURE RANDOM ACCESS

Miura²⁰⁰

Fully-automated Clinical Chemistry Analyser
up to 420 tests / hour with ISE module on board



- The New Miura 200 is the idea we have for a compact bench top random access fully automated analyser with the performance of higher class instruments.
- No compromise between throughput and size of the New Miura 200.
- The New Miura 200 is the solution for all kinds of laboratories as a main unit or a back up unit.
- 30/43 reagents on board plus diluent.
- 49 samples on board.
- Integrated ISE module for Na⁺, K⁺, Li⁺, Cl⁻ in serum, plasma and diluted urine.
- Integrated washing station.
- Integrated level and shock sensor for samples and reagents.
- Integrated positive identification for samples and reagents.
- Integrated micro metering diluter maintenance free.
- 2 years warranty.
- Miura 200 is 100% developed and produced in Italy.



TECHNICAL SPECIFICATIONS

Double arm

- Up to 420 tests per hour with ISE module on board.
- 240 Bi-reagent photometric tests/hour constant throughput.

Single arm

- Up to 360 tests per hour with ISE module on board.
- Up to 200 mono reagent tests per hour.

Common Specifications

- Analytical methods: end point mono or bichromatic, fixed time, kinetic, differential sample blank.
- ISE module for: Na⁺, K⁺, Li⁺, Cl⁻ in serum, plasma and diluted urine.
- 30/43 reagents on board plus diluent.
- Mono, double reagents method.
- Reaction temperature: +37°C ± 0.1°C
- 49 sample/ calibrator/control positions on primary tubes (Ø 12÷13mm/75/100mm)
- Automatic dilution of the samples.
- Calibration with linear/non linear curves up to 8 points, auto dilution of the calibration curve (linear regression, linear piece-wise, cubic spline, polynomial).
- Control menu with Levy-Jennings plot.
- Bar-code reader integrated for samples and reagents (optional).
- Arm equipped with liquid level detector (capacitive) and shock sensor.
- High precision micro-metering pump to dispense reagents and samples (no syringe).
- Reagent volume: 1÷400 microliters.
- Sample volume: 1÷300 microliters.
- Typical reaction volume: 200-250 microliters.
- Wavelengths on board: 8 from 340nm to 700nm plus one free position.
- Light source: Long life halogen lamp (2000 hours).
- Photometric linearity: 0÷3.0 OD.
- Reading cuvette: 80 on board re-washable made in Bionex®.
- Cuvette washing: automatic washing station.
- Water consumption: 3/4 liters per hour.
- Reagent cooler: 14°C below ambient temperature.
- All in one touch screen computer.
- L.I.S.: Bi-directional connection.
- Operative system: Windows® 8.1
- Environment temperature 18-32°C
- Dimensions: 93x72x60.

